



A collaborative project proposal for a bookshop and reading room at KANAL

hé!

Studio Lukas Wegwerth

Hanne Eckelmans — Renée Verhulst — Isabelle Marchal — Lukas Wegwerth — Corinna Dehn

Dec 20th 2022

Design philosophy for the reading room and bookshop

The welcoming, integrative and empowering spirit of KANAL and CIVA are the foundation for our design philosophy of the reading room and bookshop.

Transparency, inclusion and openness are expressed through a non-hierarchical, panoramic layout of various elements that create the opportunity for moments of interaction and encounter, for simultaneous interventions— or simply to let the eye travel.

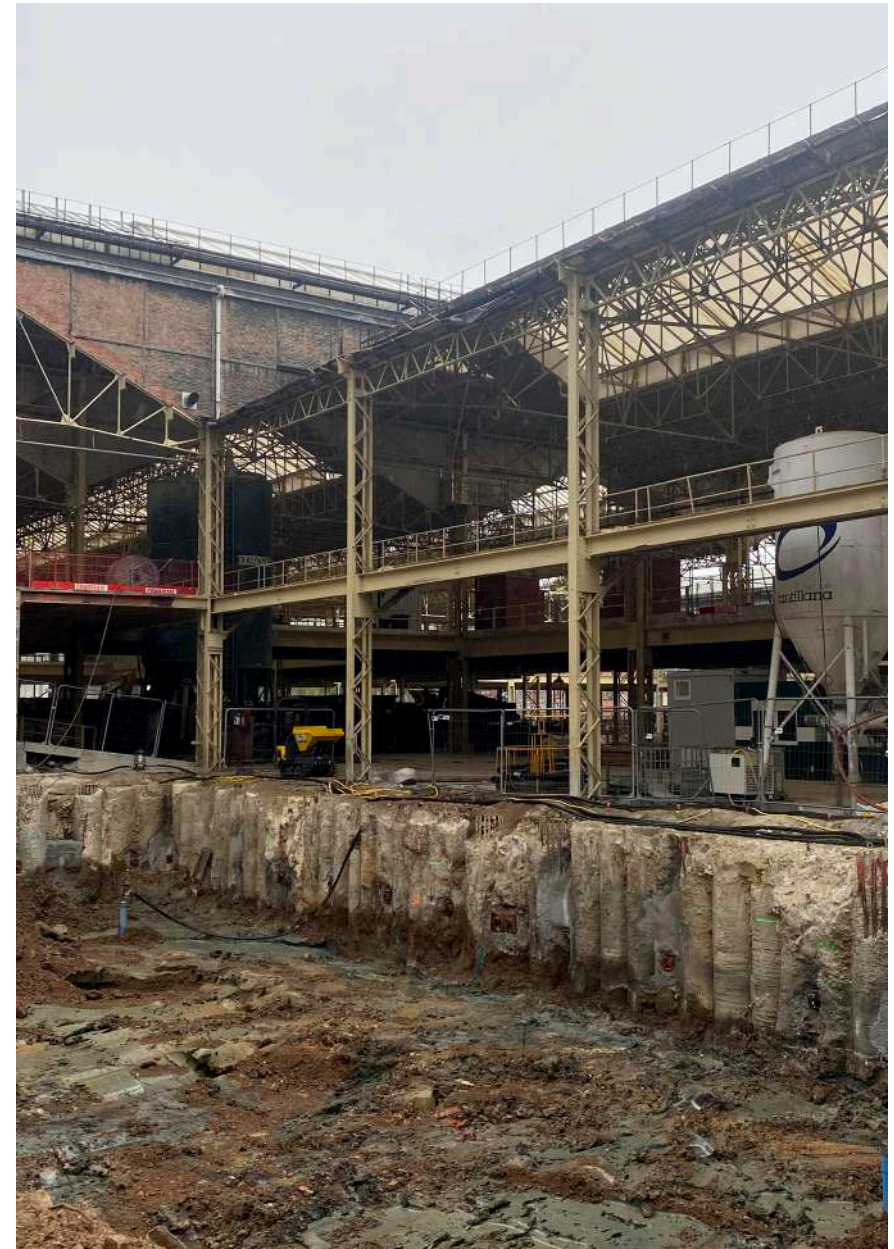
The space is not defined through elemental or structural components first, but through their potential to be used as tools to create situational or contextual frameworks: to create moments of exchange and collaboration, of working with or next to each other, of sharing knowledge or enjoying a book in solitude.

The systemic, yet unfinished character of the elements is defined through a plurality of choices between informal and formal situations, settings, events, programmed and yet unforeseen appropriations.

The potential for future adaptability, for growth and shrinkage are intrinsic— change is possible, but not required.

Our material strategy aims for longevity and locality. Ideally the sourcing for material starts at the construction site and mainly happens in the neighbourhood, weaving a web of contributors and collaborators.

Durability, non-virgin origins and a minimal use of material will be the guiding principles for materials sourced from the region or a wider context.



A local sourcing and production strategy



Within the close vicinity to the future home of KANAL and CIVA, there are various local non-profit organizations, institutions such as primary and secondary schools, design and architecture schools, designers, architects and many more creative professionals from various fields and disciplines located.

We mapped the first coordinates of a growing web of potential contributors, collaborators, producers and non-profit organizations.

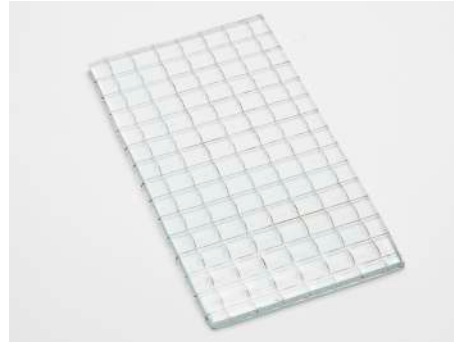
Through reaching out, we aim to include the creative spirit and energy that is located closely to KANAL into our project.

A local sourcing and production strategy

site-specific sourcing



reclaimed wood from the hoarding at the construction site



wired glass from the roof of the old KANAL building

De gebruikte materialen zijn bij voorkeur materialen van de site zelf dewelke afgebroken zullen worden. De bestaande lichtstraten van enkelvoudig draadglas en de grenen beplanking die momenteel dienst doet als werfbeschutting integreren we in ons project.

Deze zullen verder aangevuld worden met materialen van lokale grondstoffen die lokaal geproduceerd, geherformuleerd of bewerkt worden. Hout van het zoniënwood, aarde van het Brusselse grondverzet, mycelium gekweekt

op Brussels koffiegruis, wol van Brusselse schapen en alpaca's. Het zijn bio- en geogebaseerde materialen. Voor meer informatie over de bovengenoemde materialen kunnen jullie altijd terecht op de websites van deze Brusselse pioniers. www.sonianwoodcoop.be, www.bcmaterials.org, www.permafungi.be, www.lafermeduparcmaximilien.be

Verder gebruiken we tweedehandsmaterialen dewelke niet van de site maar bij voorkeur wel uit de buurt komen. Het kunnen 2e, 3e, 4e, ... hands materialen zijn.

sourcing from the neighbourhood



earth brick sourced from bc materials



Sonian wood



mycelium panels sourced from permafunghi



lamb wool sourced from ferme maximilien

sourcing from the region



laser-cut company for the manufacturing of the stainless steel elements



reclaimed wood panels from re-distribution organizations



deadstock fabric or recycled fabric from regional textile mill

De "Three+One" knoop is een elementair systeem dat modulaire en structuralistische ontwerp- en productiemethoden toepast voor meubels en structuren. Het systeem zal regionaal geproduceerd worden.

De kleuren van alle elementen zullen bepaald worden door de karakteristieke en natuurlijke aard van elk materiaal.

Deze lijst zal uiteraard nog verder onderzocht en uitgebreid worden gedurende het proces.

Inviting local actors into the design process



Re-used textiles—workshop for the application of reclaimed textiles: creating patterns for the curtains and cushions through prototyping—potential partner: maison des femmes

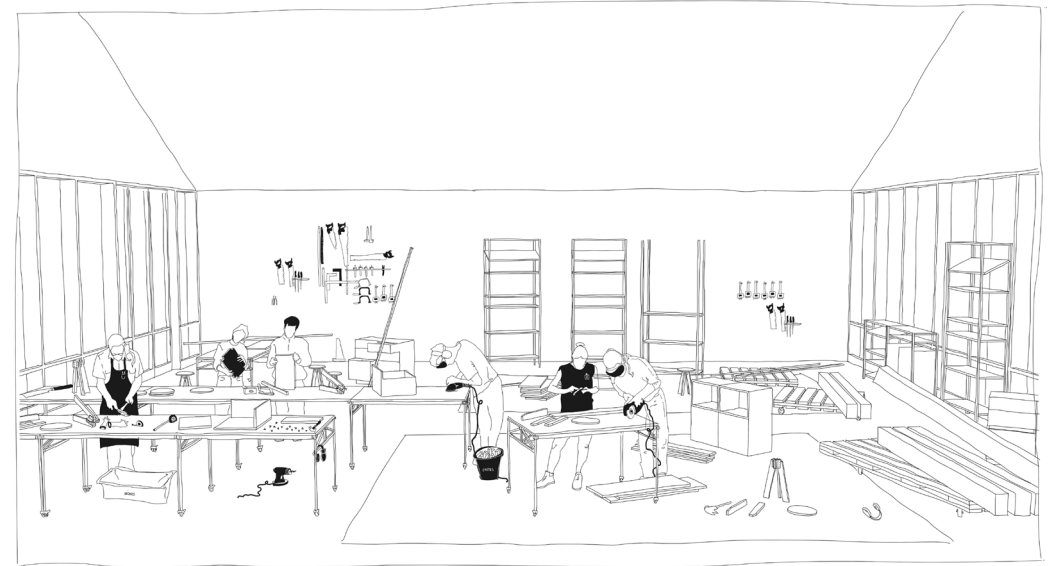
We envision a series of workshops to integrate active learning, skill sharing and the collective production of knowledge through making and building into our creative process.

These workshops will link local material producers and creators to local actors such as institutions, organizations and groups of interested individuals, youth groups and kids— forming interdisciplinary contexts that will invite all participants to take initiative and to get familiar with the space that ultimately will be theirs to use.

By creating these specific intersections in the design phase of the project, we not only believe that our creative process and results will be enriched, but also that KANAL and CIVA can be established as a space for collaboration, participation and co-determination.

We want to collaborate with specific groups and individuals, because we believe that all participants will benefit from it.

Earth—workshop for creating bookends and shelf supports—potential partners: BC X LUCA school of arts



Reclaimed wood— workshop for making bookends and shelf supports—potential partner: atelier grooteiland

It will lead to ways of thinking and perceiving, results and approaches yet unknown to us— it will be essential to come together to create a place for all, a place that is more than its part and that can be populated and appropriated by its neighbours, local communities and individuals.

A design process with pockets of inclusivity can be the cornerstone for this place.

Lamb wool—workshop for creating parts of the textile elements—potential partner: ferme maximilien



A participatory space

The first-time or occasional visitor, the curious user and the experienced resident will be presented with a range of elements that each can appropriate on their own terms and according to their individual or collective needs.

The non-scripted setting of elements provides entry points for various scenarios and stories, activities and applications.

These may range from focus reading and studying in a shared workspace, learning about the CIVA archive and enjoying a curated selection of rare books, reading in solitude or together, attending a book launch or presentation or taking a break from the day.

The under-defined character of the elements and structures in the reading room and bookshop will serve KANAL and CIVA with a series of options for programming: the organization of day-to-day needs, the hosting of events such as book launches, presentations and symposia or making the archive accessible to the public through exhibitions or less formal displays.

The unfinished and infinite are incorporated characteristics of the make of each structure. An assemblage of earth bricks and wooden modules can be rearranged in countless new formations.

All metal and wooden structures are constructed with the Three+One system—an elementary system which allows for constructions with minimal material input. It has yet been applied for various furniture and architectural-scale structures for social spaces. Based on a minimal joint, Three+One holds convertibility, future adaptability and a straight-forward construction approach as its core values.

The gesture towards the public is welcoming, trusting and inviting through the participatory practice of shaping of the place.

The atmosphere of the space will be shaped collectively by CIVA, KANAL and its visitors.



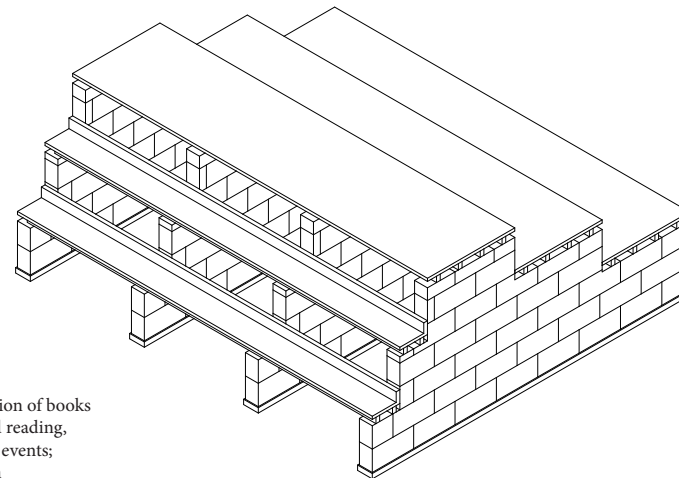
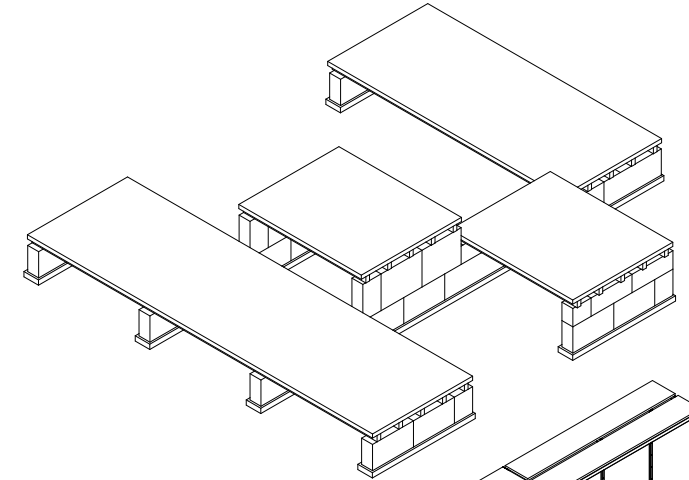
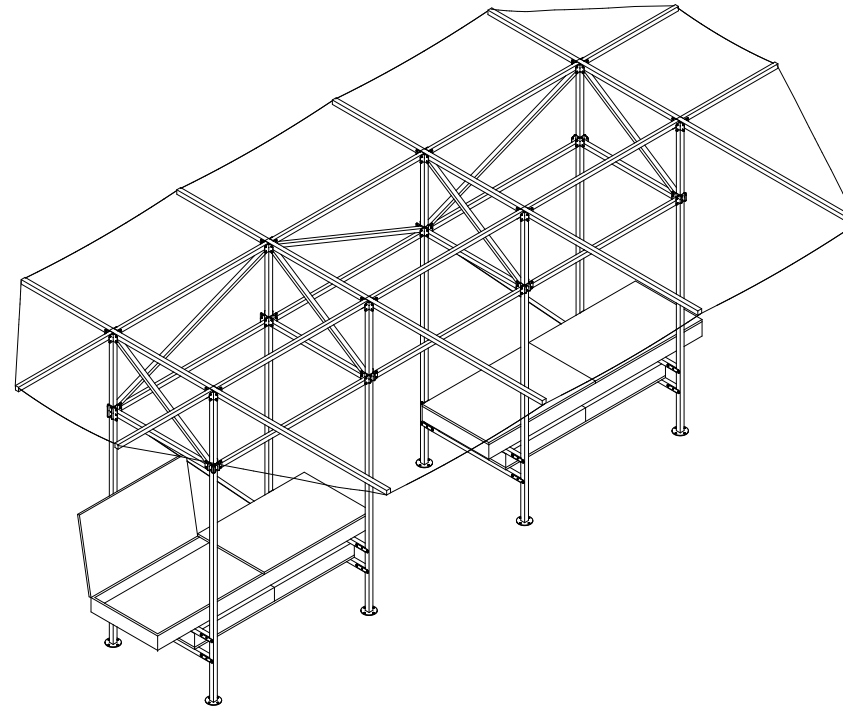
UFO*— Undefined fixed object



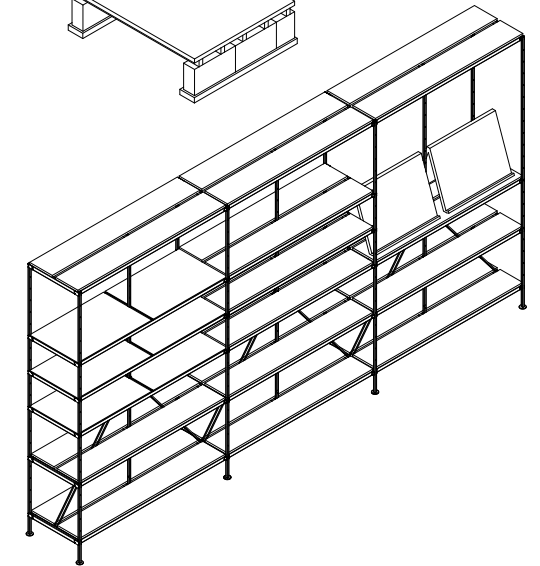
The Three+One system and earth blocks will function as the main components for these structures

Ces objets, sont pèrennes et fixes dans l'espace de la librairie et dans la salle de lecture. Ils ne sont pas immédiatement reconnaissables, ce qui les rend ouverts à l'interprétation. Les visiteurs peuvent se les approprier de manière spontanée et créative. En étant «non identifiable» et sans référencement, ces «OVNI» sont ouverts à l'interprétation et à l'usage de tout à chacun.

Leur nature statique réside par leur base stable faite de briques en terre crue.



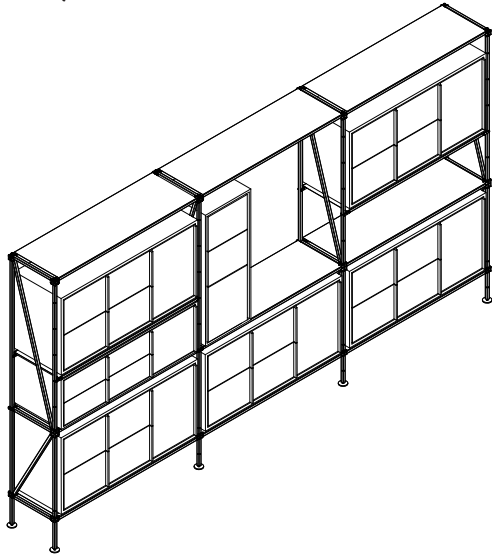
UFO* Above—
functions: display of collection of books (~12 m), relaxed sitting and reading, space for presentations and events; located in the reading room



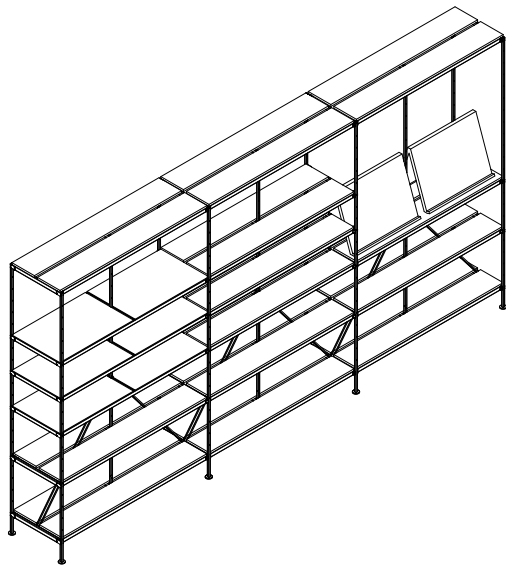
UFO* Around—
functions: light display of collection corresponding with the current exhibitions at CIVA & Centre Pompidou (~22 m), cash desk located in the bookshop

Steady elements, nomadic elements and add-ons

Steady elements

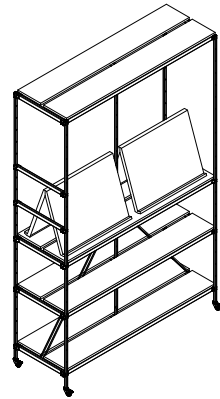


Lockers—
stainless steel structure with wood lockers
located in the SAS

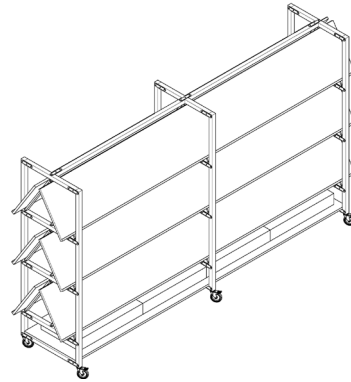


Bookshelves—
stainless steel structure with wood and glass shelves
and permafungi displays,
located in the bookshop

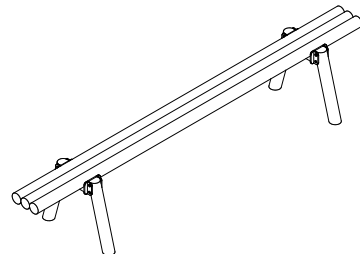
Nomadic elements



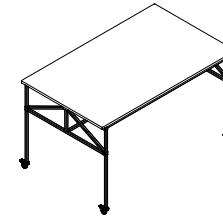
Mobile bookshelves—
stainless steel structure with wood shelves and permafungi displays,
located in the bookshop



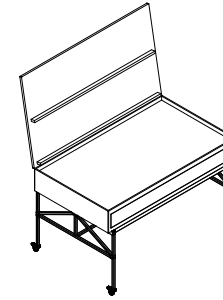
Mobile display shelves—
wood structure with wood shelves and permafungi displays,
located in the reading room



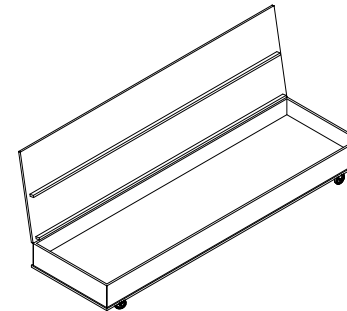
Bench—
wooden beams and stainless steel connectors,
located in the reading room



Mobile table—
stainless steel structure with wooden top,
located in the reading room



Mobile display table—
stainless steel structure, wooden box with lid, glass cover for sensitive
and precious objects,
located in the reading room



Mobile platform—
wooden box with lid,
located in the reading room & bookshop

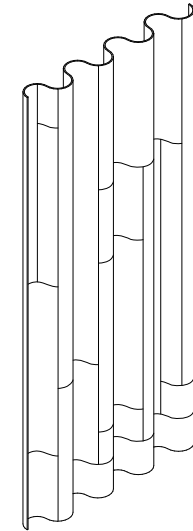


Stool—
wooden box with lid,
located in the reading room and
bookshop

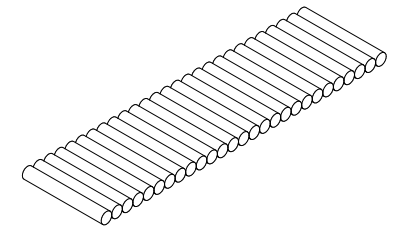


Chair—
Enzo Mari «Mariolina» from
existing CIVA furniture
located in the reading room

Add-Ons



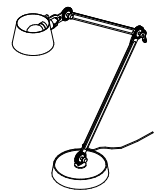
Curtains—
reclaimed textiles, deadstock source or recycled fibre origin
located in the reading room



Upholstery—
recycled textile with shredded textile filling,
located in the reading room

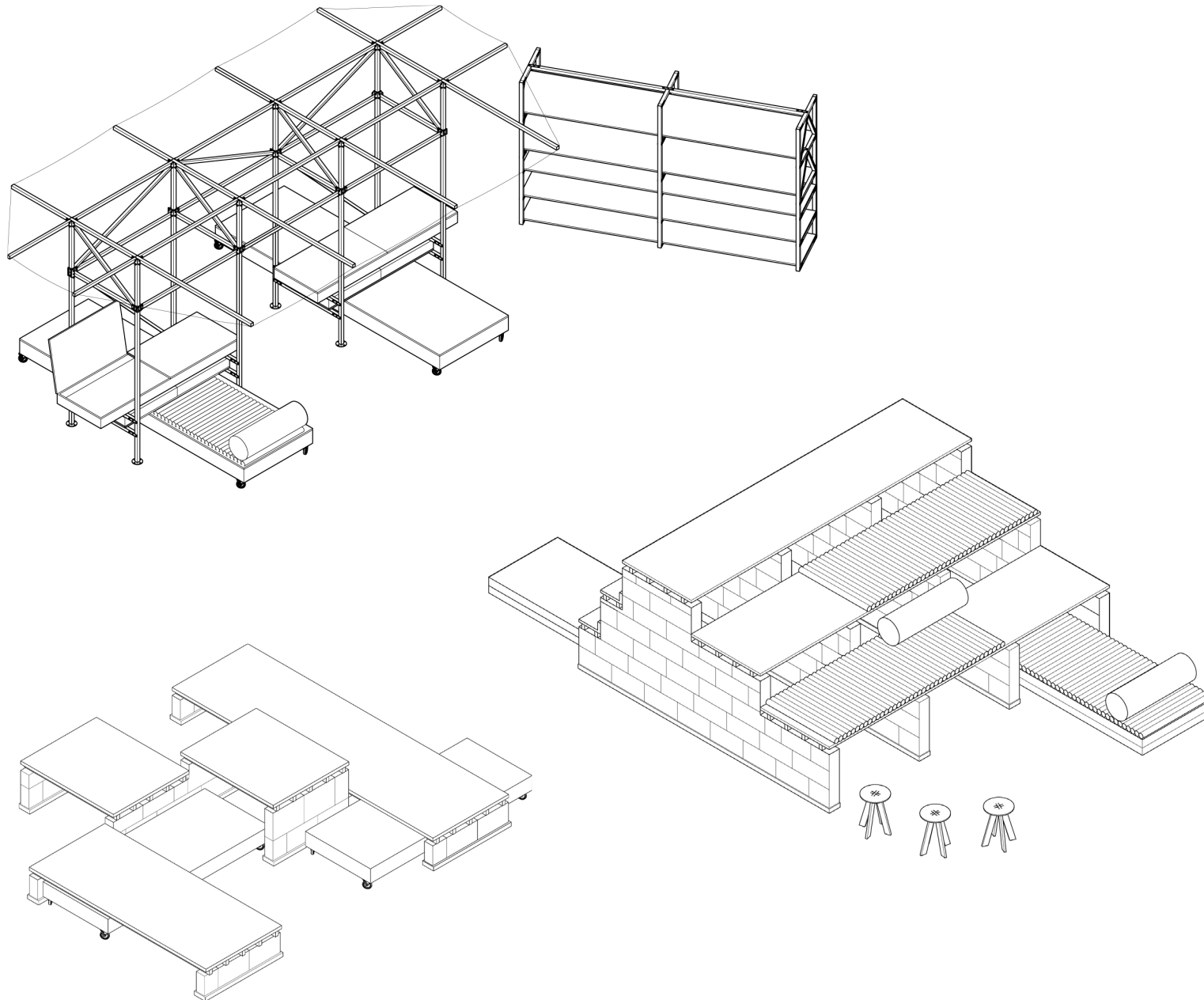


Pillow—
recycled textile with shredded
textile filling,
located in the reading room



Reading light—
ready made item, to be selected
with CIVA-Team,
located in the reading room

Steady and nomadic— combined elements



Sofa

Een platform is een ondiep en breed opbergmeubel op wieltjes. Door er kussens op uit te rollen of te stapelen ontstaat een comfortabele sofa waarop de gebruiker zich languit kan installeren met een boek. Meerdere sofa's samen vormen een zacht rustplatform.

UFO's

De flexibiliteit van de UFO's is te vinden in de multifunctionaliteit, ze kunnen verschillende functies invullen. In de eerste plaats zijn het de 'dragers' van de boeken. In de bookshop worden de publicaties die gelinkt zijn aan de actuele expo's in Centre Pompidou & CIVA op de UFO gepresenteerd. In de leeszaal zijn beide UFO's een overzichtelijke display voor de CIVA-boekencollectie die hier vrij te raadplegen is. De natuurlijke materialen van de UFO's zorgen er bovendien voor dat de boekcovers naar de voorgrond treden.

UFO Around: hier wordt de display van boeken gecombineerd met een centraal informatie- en verkooppunt. Platformen kunnen eronder geschoven worden als opbergmeubel. **UFO Above:** enkele platformen aan de basis van deze UFO vormen samen een tribune waar mensen een event of lezing kunnen bijwonen of er zich languit kunnen installeren met een boek aan de hand van comfortabele kussens.

UFO Under: luifel die mensen verzamelt rondom de boeken, kan ook als canvas dienen voor gastspreker(s) en waarrond het publiek zich kan groeperen.

UFO above & under kunnen bovendien samenwerken bij een groot event als podium & tribune.

Layers of flexibility

Les UFO—

Les UFO qui sont des objets fixes, non identifiables, viennent structurer et composer le paysage du KANAL. Leur flexibilité réside plutôt dans leur multifonctionnalité et dans leur liberté d'action.

1. UFO «Autour» - présent au sein de la librairie
2. UFO «Au-dessus» - Disposé à l'entrée, il sert d'affichage
3. UFO «En dessous» - Sert de prolongement à l'UFO «au-dessus»

Statique & Nomade—

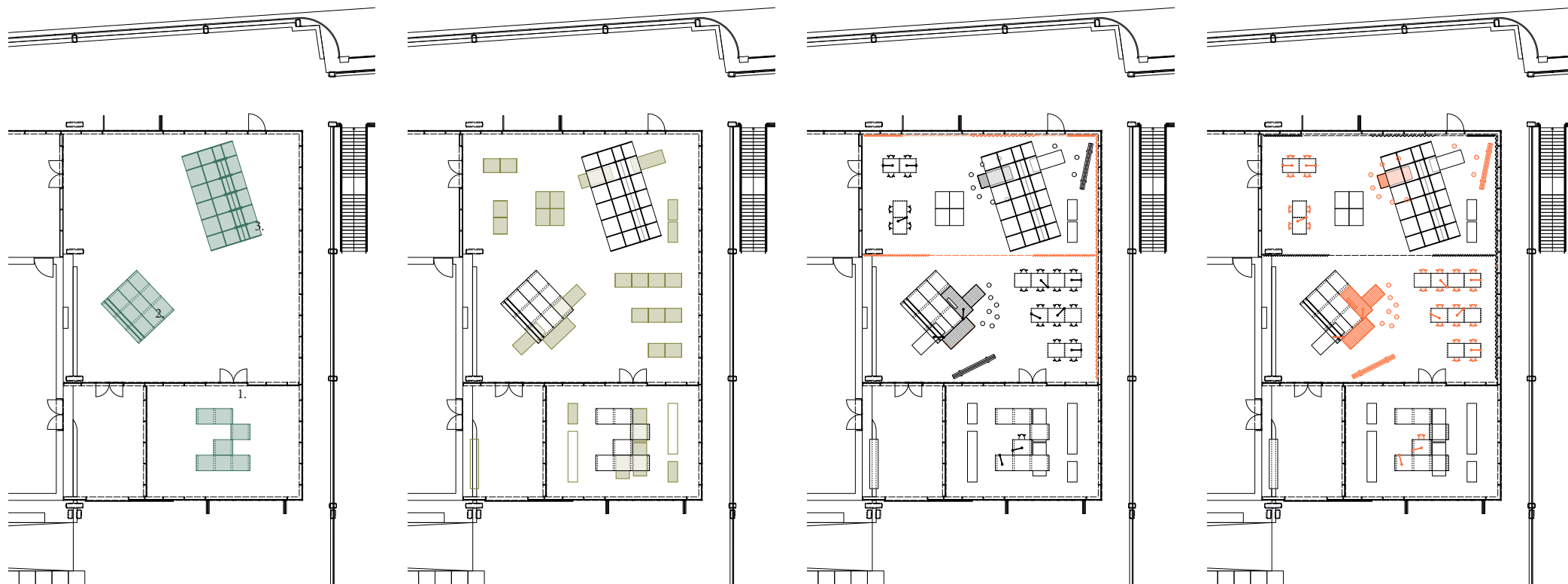
Autour des UFO, les espaces se composent d'une multitude de tables, de chaises, de tabourets, de bancs, de plateformes et d'étagères. Ceux-ci sont librement mobiles et peuvent être regroupés ou non en fonction du scénario ou des besoins des utilisateurs. Afin de respecter au maximum l'architecture du lieu, les murs et les parois vitrées sont dégagées. Le mobilier s'en détache. Ceux-ci peuvent se mouvoir dans les autres espaces alentours, franchissent ainsi les frontières et activent le «Bridge» et la «Frite». Les autres étagères de la librairie sont elles chargées par la collection «permanente» de la librairie. Elles sont donc statiques. Les casiers prévus dans les sas ont également un caractère défini et fixe.

Rideaux—

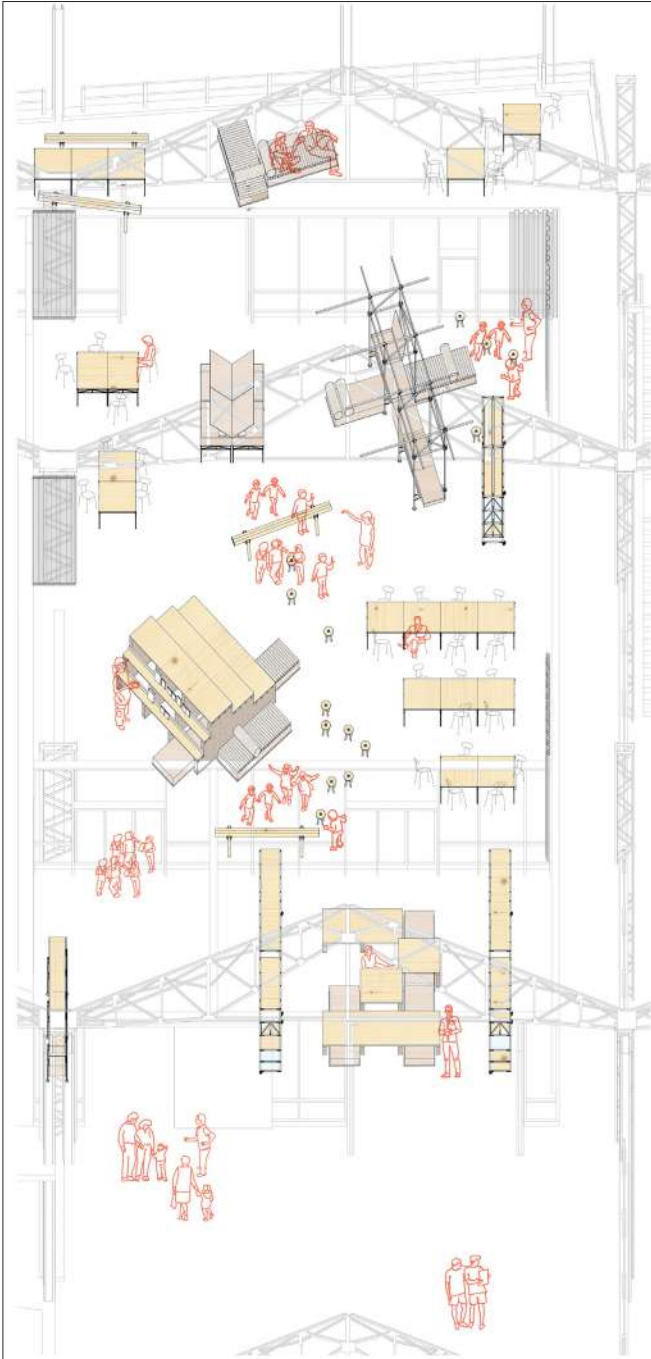
Un rail est prévu le long des murs extérieurs de la salle de lecture. Un second rail, proposé par nos soins, se situe au centre de la pièce, sous la poutrelle transversale. Outre les améliorations acoustiques, les rideaux peuvent également être utilisés pour diviser visuellement et fonctionnellement la grande pièce en deux sous-parties. Chacune d'elle dispose de son propre accès et peut donc fonctionner de manière autonome, par exemple lorsqu'un événement de moindre envergure est organisé dans la salle de lecture mais que les étudiants sont en même temps invités à préparer leurs examens. La partie nord fonctionne avec la «Frite», la partie sud est alors une extension de la librairie. Il s'agit d'un patchwork de tissus issus de fin de stock.

Add-Ons—

Les coussins sont enroulables et empilables. Les lampes sont appropriables et peuvent être branchées sur les éléments fixes. Cependant, leur flexibilité est limitée car ils sont liés aux prises du sol fixes.

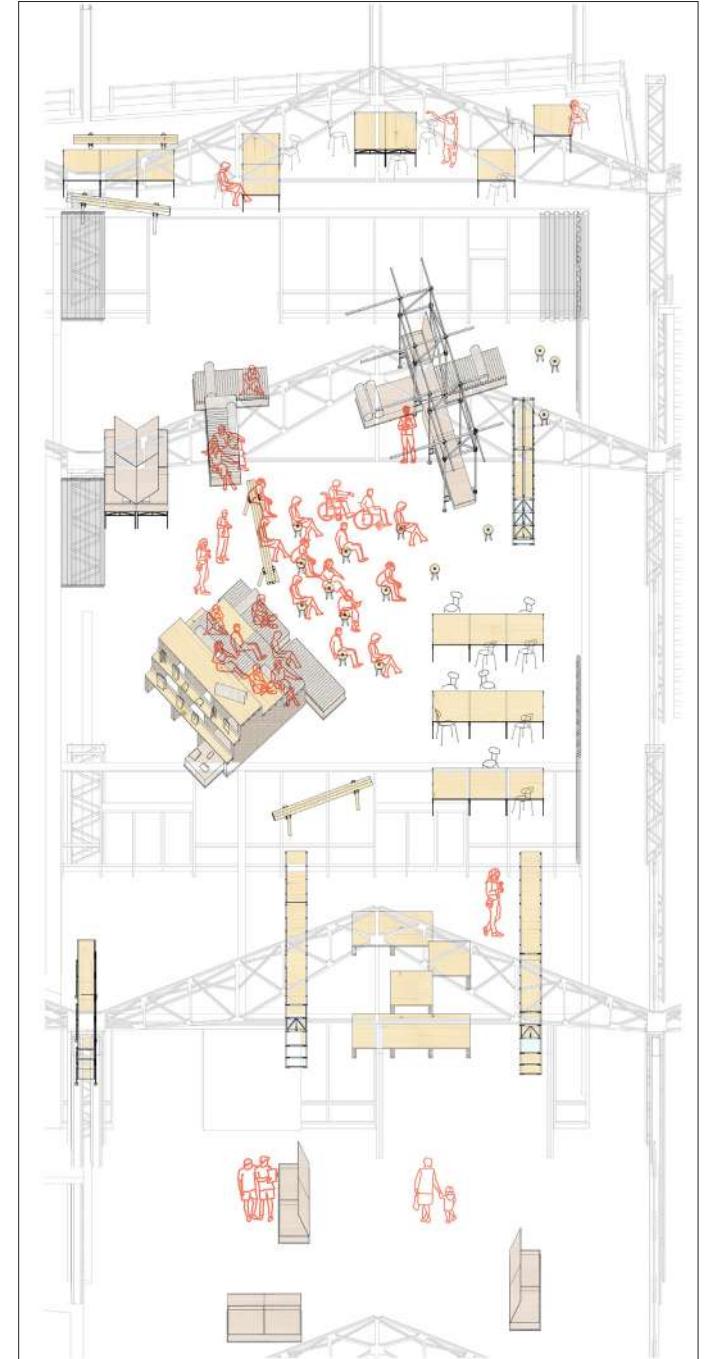


Scenarios of daily use



September: Wednesday, 14.00

It is a quiet moment in the bookshop. Some visitors in the reading are looking through books of the CIVA archive. Children from the kindergarten nearby attend the reading of a children's book. Some of their parents have a chat on the «bridge», enjoying a cup of coffee.



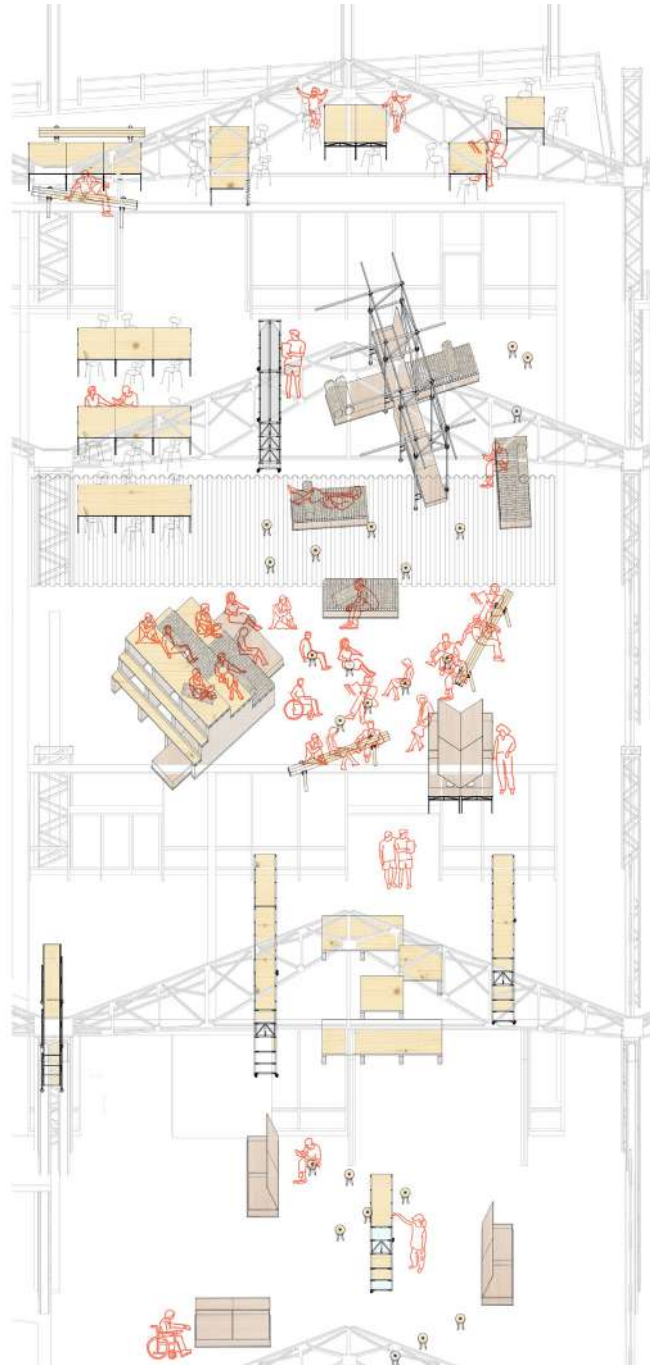
January: Tuesday, 18.00

The bookshop is still open and a few visitors scroll through the selection of books on the «bridge». A symposium took place in the reading room this afternoon. Many of the participants are attending the final talk of the program. Some pupils finish their homework in the «frite».

Scenarios of daily use

April: Sunday, 15.00

A session of '10 books by' takes place in the reading room. The curtain is used to create a distinguished area for the event. The other half of the reading room and the «frite» are frequented by casual visitors. The bookshop is extending its offer to the «bridge» and invites passersby to sit down and browse.



June: Monday, 15.00

On the «bridge», there is a book signing with the author of a new publication on the architecture of Brussels. The many visitors have a seat on platforms, benches and stools. Other visitors are browsing through the bookshop. The reading room is rather quiet. Some pupils are in the «frite», enjoying their afternoon.

