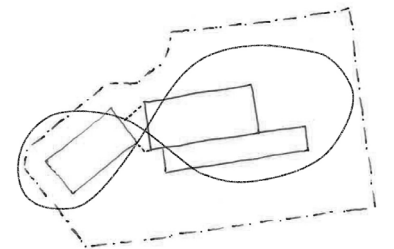


# Parcour entre cour et jardin

## Offerte

### 1135 - Hub circulaire

TM evr-architecten / 1010 architects / IRS / EGEON / De Fonseca / Corridor / Bureau Dirk De Groof



# Offerte

## 1135 - Hub circulaire

DOCUMENT B: Vrij oefening

**evr-architecten**  
Oktrooi plein 1 bus 301  
9000 Gent  
T +32 9 228 57 52  
[www.evr-architecten.be](http://www.evr-architecten.be)

**evr**

**1010 Architecture Urbanism**  
Birminghamstraat 57  
1080 Brussel  
T+32 485 15 11 70  
[www.1010au.net/office](http://www.1010au.net/office)

**1010**

**Corridor CV**  
Kerkstraat 108  
9050 Gentbrugge  
T +32 498 72 15 13  
[www.corridor.land.be](http://www.corridor.land.be)

**CORRIDOR**  
natuur werkt

**IRS Studiebureau**  
Minneveldstraat 124  
3070 Kortenberg  
T +32 2 757 01 00  
[www.irs-studiebureau.be](http://www.irs-studiebureau.be)



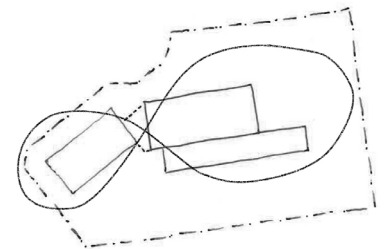
**Bureau De Fonseca**  
De Villegas de Clercampstraat 182  
1853 Grimbergen  
T +32 2 267 05 38  
[www.defonseca.be](http://www.defonseca.be)



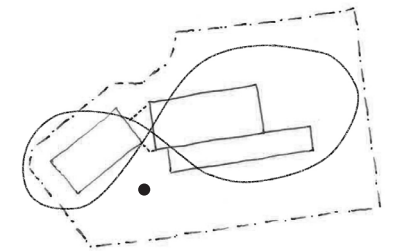
**Groep Dirk De Groof**  
Mechelbaan 657  
2580 Putte  
T +32 15 23 57 67  
[www.dirkdegroof.be](http://www.dirkdegroof.be)



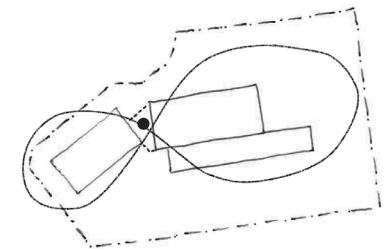
**EGEON**  
Brusselsesteenweg 208  
9090 Melle  
T +32 9 310 55 55  
[www.egeon.be](http://www.egeon.be)



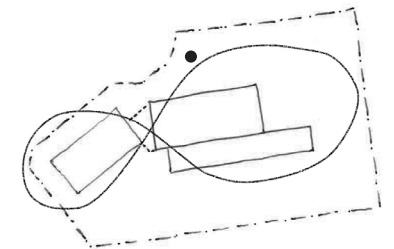
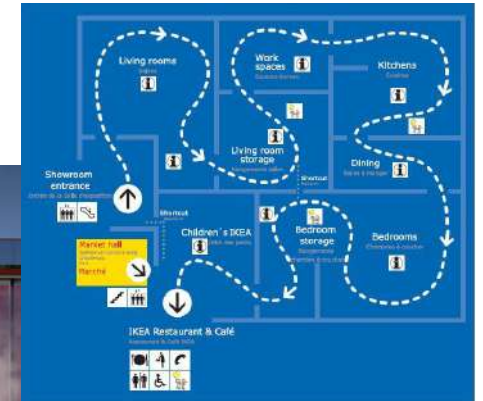
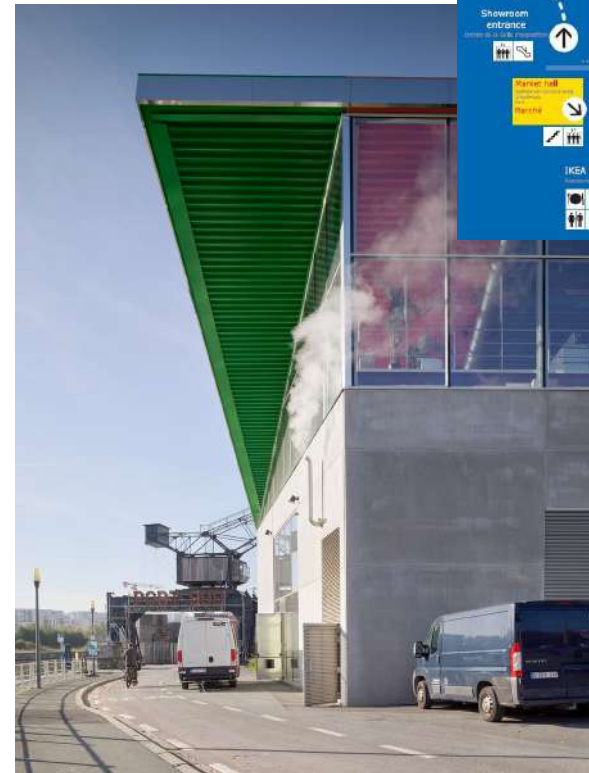
# Jardin



# Entre les deux



# Cour



evr

1010



IRS  
STUDBUREAU

CORRIDOR  
natuur werkt

DE FONSECA  
adviseurs

GROEP  
DIRK DE GROOF

EGEON INGENIEURS